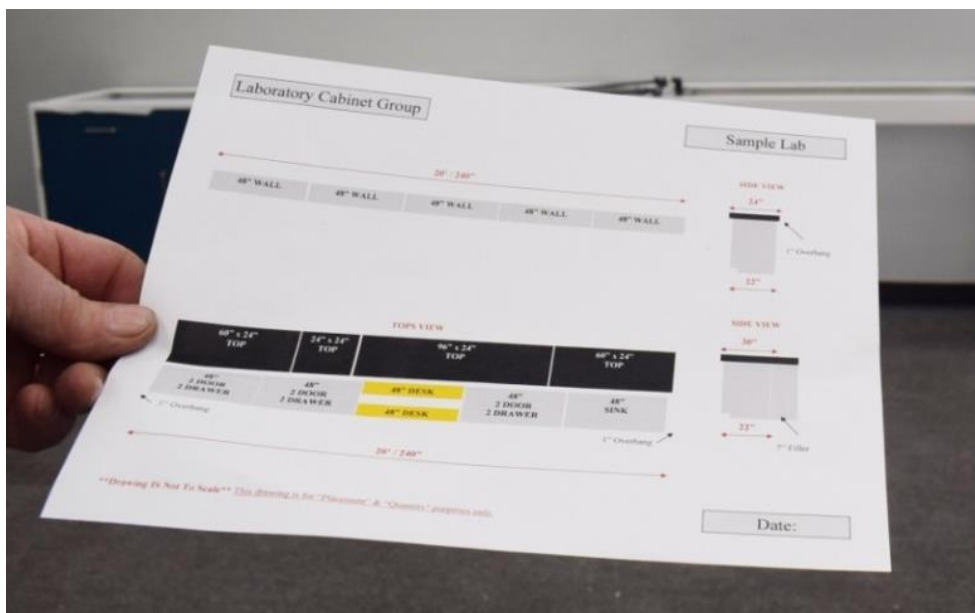
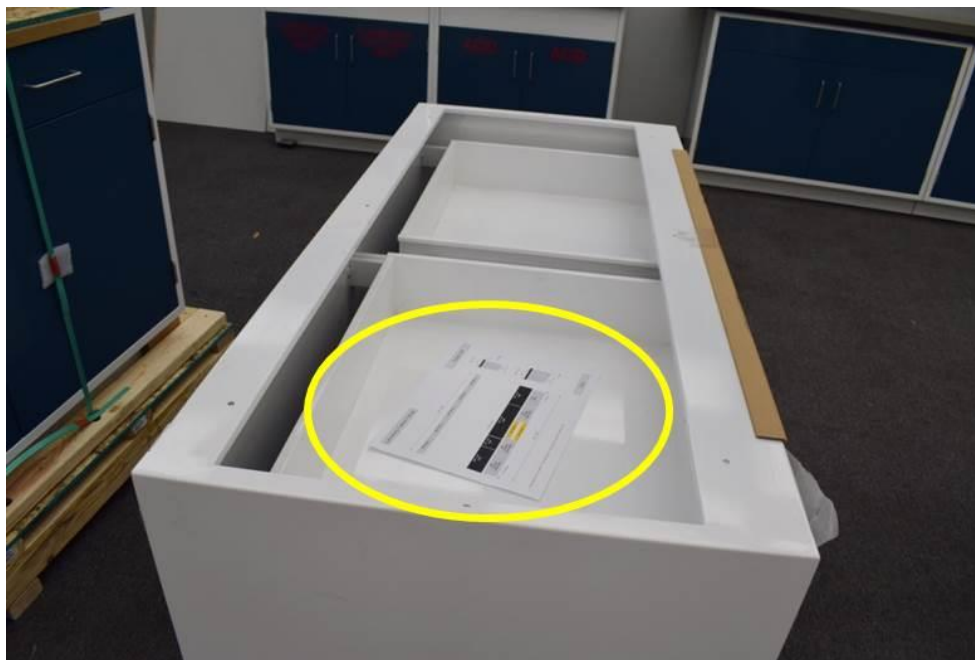




Instructions for:

# Installing Wall Cabinets

Rev 1.2 1/25/2025



Use the provided layout drawing as a guide to position cabinets



**Mount wall cabinets.** Using the layout drawing, determine the location of wall cabinets relative to base cabinet group(s). The standard spacing between the bottom of the wall cabinet and the countertop is 18"

NOTE: You may be installing wall cabinets without base cabinets. If so, the bottom of wall cabinets will be 54" from the floor



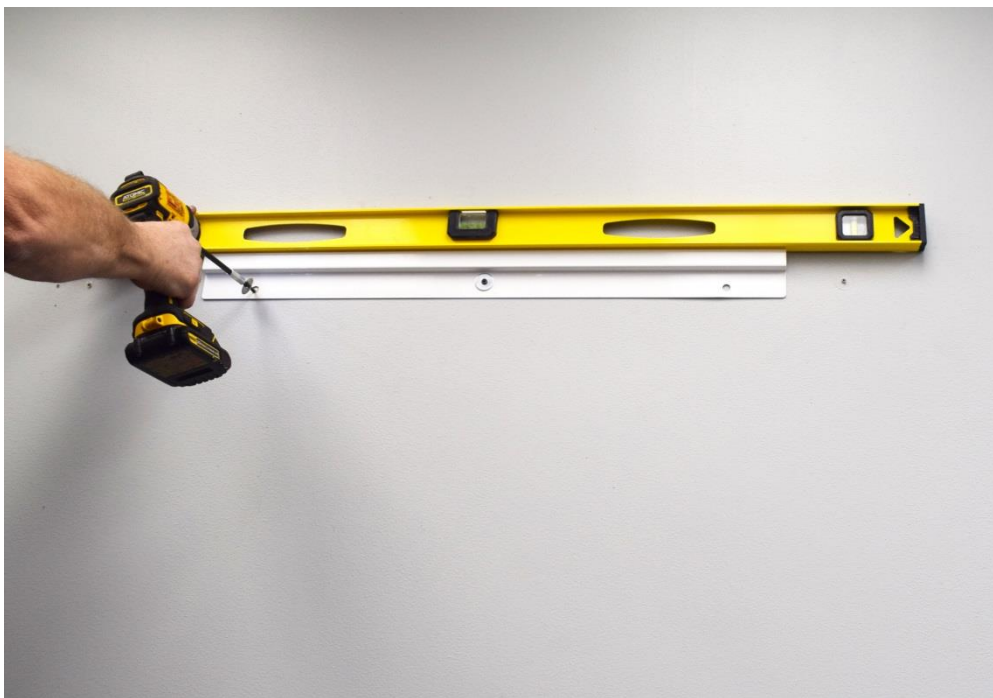
Cabinets are hung using brackets



**Mount bracket.** Measure 48" up from the countertop

Using **one screw**, mount the **top of the bracket to the wall at 48"**

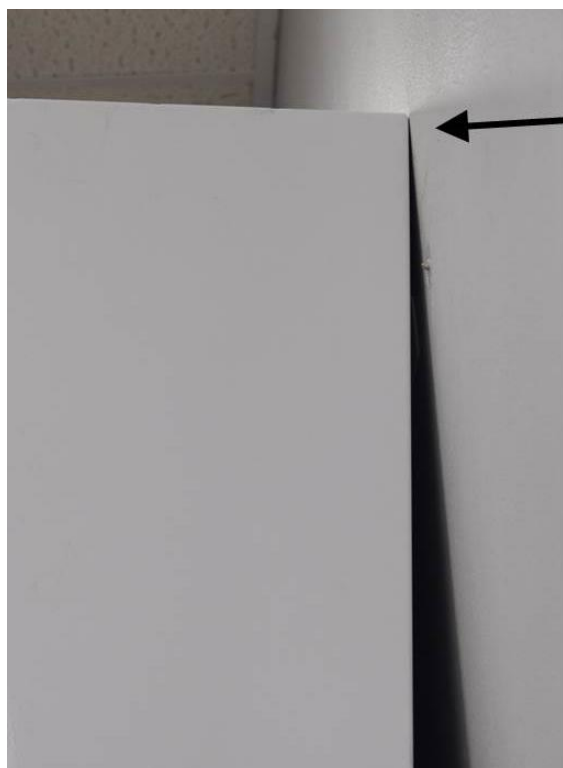
NOTE: if you are installing wall cabinets without base cabinets, the top of the bracket will be 84" from the floor



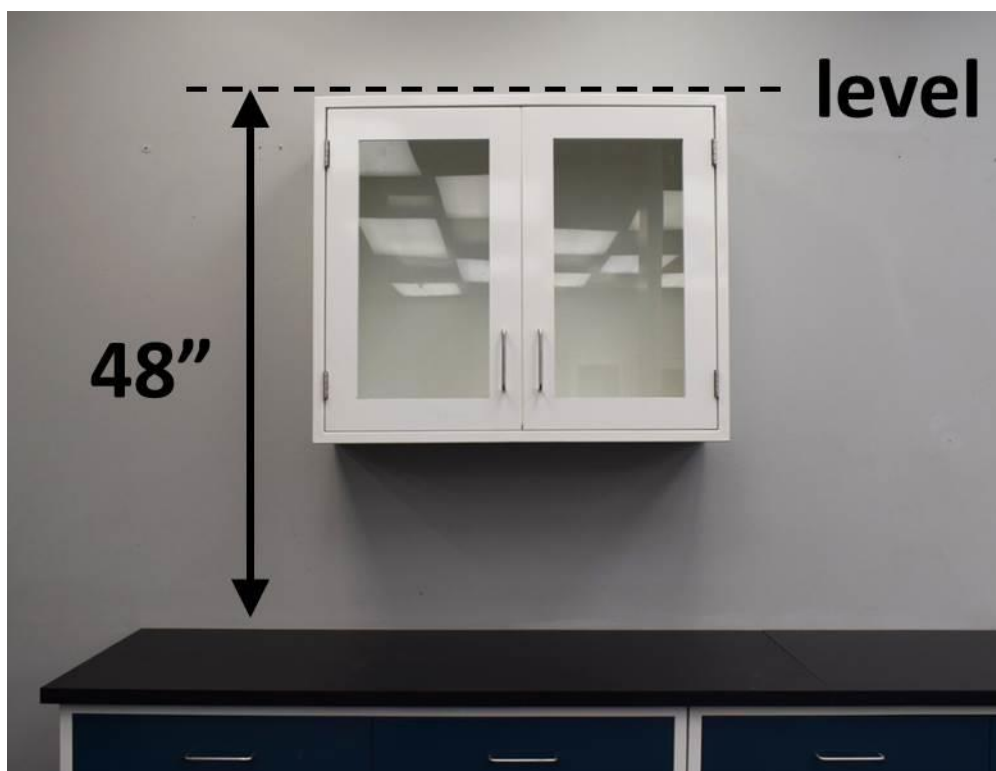
Next, using a level to ensure the bracket is level, finish screwing the bracket to the wall



**Do not screw the bracket too tight**, leave it a little loose because the wall may not be flat, and you may need some play for the cabinet to slide down properly onto the bracket.



Hang cabinet  
on bracket

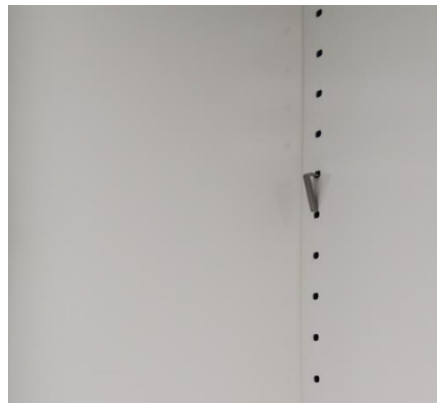


**Hang cabinets on brackets.** Double check that the top of the wall cabinet is level and 48" from the countertop. If it is not level at 48", it is NOT positioned on the bracket correctly.





Each wall unit has **one shelf and one bottom filler**.  
The **thin filler** goes in the bottom of the cabinet.  
The **thicker shelf** is placed in the middle of the cabinet.



Decide where you want to position the shelf.  
Locate and install the clips (provided in the cabinet)



Place the shelf on top of the clips





If you have more than one wall cabinet (in a row), screw the units together using short screws located to the front (close to the doors) where you will not come in contact with them.